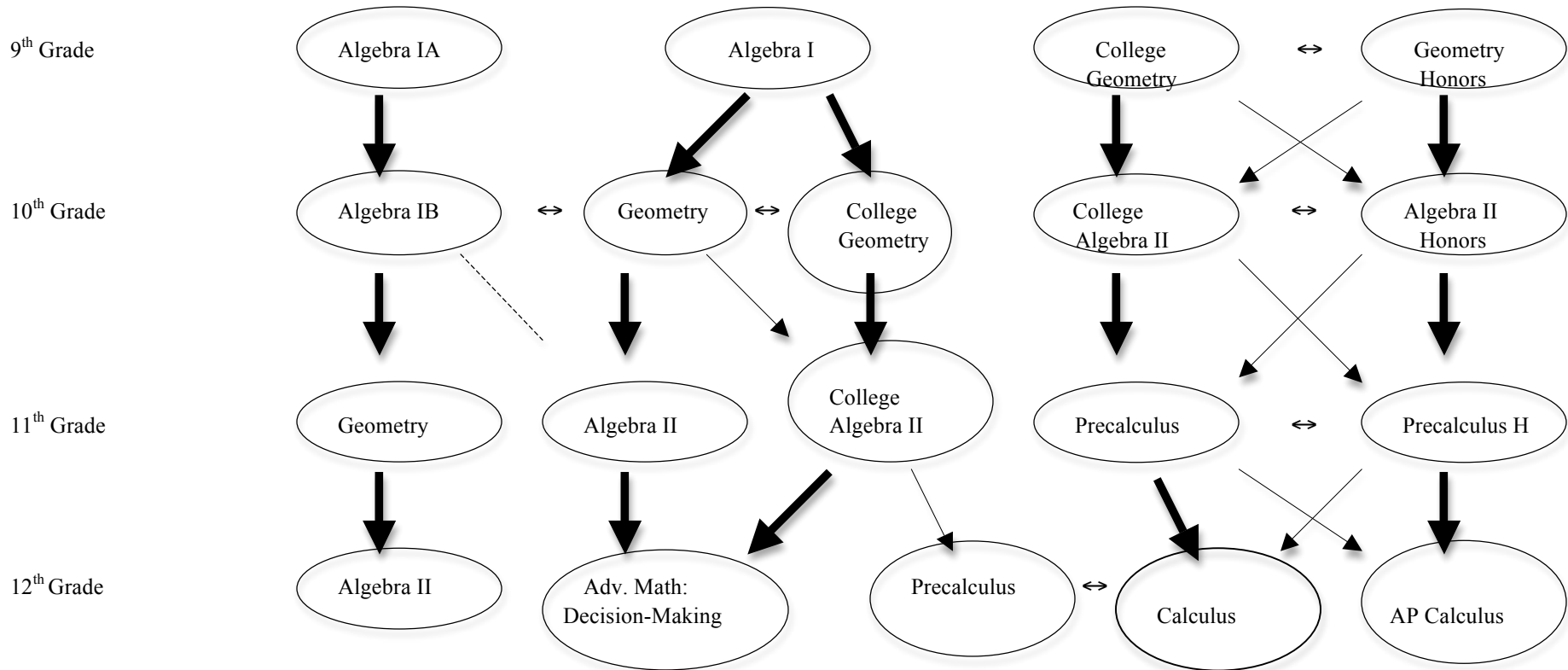


STEM: Math

4 COURSE CREDITS REQUIRED FOR GRADUATION BEGINNING WITH CLASS OF 2015



- ... if at proficient level on CAPT
- with teacher recommendation
- ➔ represents common path taken by student
- represents possible path taken by student
- ↔ Lateral movement when grade level

Non-sequential Electives:

- Exploring Numeracy
- Programming
- Networking I, II, III, IV
- SAT PREP/Math Topics
- Publications
- Probability and Statistics
- AP Statistics (VHS)