

A SAMPLE OF COLLEGES

OUR RECENT GRADUATES ATTEND

HOME OF THE BEARS



2010-2011

ENROLLMENT: 784 (grades 9-12)

FACULTY: 77 full and part-time

ACCREDITATION: NEASC; CT State
Department of Education

SCHEDULE: Rotating A/B Block Schedule
(since 1998)

CREDITS REQUIRED FOR GRADUATION: 25

CURRICULA

- College Preparatory
- Fine Arts: Art, Music, Drama
- Business/Marketing
- Graphic Arts
- Technology Education
- Languages – French, Spanish, and Mandarin Chinese

ADVANCED PLACEMENT COURSES

- Art (2-D, 3-D, Drawing Portfolio)
- Music Theory
- English (Language and Literature)
- U. S. History, European History
- Government & Politics
- Psychology (VHS)
- Biology, Chemistry, Physics B/C (VHS)
- Environmental Science (VHS)
- Calculus AB, Calculus BC (VHS)
- Computer Science (VHS)
- Economics (VHS)
- Statistics (VHS)

TESTING PROGRAM

- CT Academic Performance Test (CAPT)
- Armed Services Voc. Aptitude Battery
- Interest Inventories
- NOCTI (Career Tech Ed Assessment)
- PSAT/NMSQT
- SAT-I, SAT-II, Advanced Placement

- | | |
|--------------------------------------|---------------------------------------|
| Alfred University | Northwestern CT Community College |
| Amherst College | Ohio State University |
| Armstrong Atlantic University | Pace University |
| Assumption College | Penn State |
| Babson College | Philadelphia University |
| Becker College | Pratt Institute |
| Bentley College | Princeton University |
| Berklee School of Music | Providence College |
| Boston College | Quinnipiac University |
| Boston University | Rensselaer Polytechnic Institute |
| Brandeis University | Rhode Island College |
| Brown University | Rhode Island School of Design |
| Bryant University | Rhodes College |
| Burlington College | Rochester Institute of Technology |
| Capitol Community College | Roger Williams University |
| Castleton State College | Rutgers University |
| Catholic University | Sacred Heart University |
| Central Connecticut State University | Saint John's University |
| Champlain College | Saint Joseph's College |
| Clark University | Saint Michael's College |
| Clarkson University | Salve Regina College |
| College of the Holy Cross | Savannah College of Art & Design |
| Columbia University | Scripps College |
| Community College of Rhode Island | Southern Connecticut State University |
| Coast Guard Academy | Seton Hall University |
| Clemson University | Simmons College |
| Coastal Carolina University | Skidmore College |
| College of the Holy Cross | Smith College |
| College Mt. St. Vincent | Southern NH University |
| Colorado State University | Springfield College |
| Connecticut College | Springfield University |
| Culinary Institute of America | St. Anselm College |
| Curry College | St. Michaels College |
| Dartmouth College | State University of NY Buffalo |
| Denison University | Stockholm School |
| DePaul University | Stonhill College |
| Drew University | Suffolk University |
| Drexel University | SUNY at Oneonta |
| Duke University | Syracuse University |
| Eastern Connecticut State University | Teikyo Post University |
| Emerson College | Temple University |
| Endicott College | Thames Academy |
| Fairfield University | Three Rivers Community College |
| Fashion Institute of Technology | Tufts University |
| Florida Institute of Technology | Tulane University |
| Florida State University | United States Military Academy |
| Fordham University | University of Alaska - Anchorage |
| Franklin Pierce College | University of Central Florida |
| Georgetown University | University of Connecticut |
| Georgia Institute of Technology | University of Delaware |
| Gordon College | University of Maine |
| Goucher College | Univ. of Massachusetts - Amherst |
| Harvard University | Univ. of Massachusetts - Dartmouth |
| Hofstra University | University of Miami |
| Ithaca College | University of Michigan |
| James Madison University | University of New England |
| Johnson & Wales University | University of New Hampshire |
| Keene State College | University of Hartford |
| Kenyon College | University of Maryland @ College Park |
| LaFayette College | University of New Haven |
| Lassell College | Univ. of North Carolina-Chapel Hill |
| Maine Maritime Academy | University of Rhode Island |
| Manchester Community College | University of Tampa |
| Manhattan College | University of Vermont |
| Marshall University | University of Virginia |
| Mass Maritime Academy | Vanderbilt University |
| Mass College of Art | Vassar College |
| Mercyhurst College | Villanova University |
| Middlebury College | Virginia Military Institute |
| Mitchell College | Virginia Polytechnic Institute |
| Monroe Community College | Western Connecticut State University |
| Mount Holyoke College | Wellesley College |
| Naugatuck Valley Community College | Western Colorado University |
| NE Inst. Tech. | Wentworth Institute of Technology |
| Nichols University | Wheaton College |
| Northeastern University | Worcester Polytechnic Institute |
| | York College of PA |

B
R
O
W
N
&
W
H
I
T
E

STONINGTON HIGH SCHOOL

2010-2011 PROFILE

Mission Statement

Stonington High School represents a community committed to fostering a lifelong pursuit of learning in a challenging, motivating, and inspiring environment where all students acquire the skills, knowledge and attitudes necessary to become responsible citizens as well as lead a productive and rewarding life.



Stonington High School

176 South Broad Street
Pawcatuck, CT 06379
Phone (860) 599-5781
FAX (860) 599-5784
Guidance (860) 599-2180

Stonington is located in New London County in the southeastern corner of Connecticut, bordering the state of Rhode Island. With a population of approximately 18,000, Stonington includes the villages of Stonington, Mystic, Old Mystic, and Pawcatuck. Stonington is a socio-economically diverse suburban community whose principal industries are manufacturing, tourism, small businesses, and specialty shops.

ADMINISTRATIVE AND GUIDANCE PERSONNEL

- Leanne Masterjoseph, SUPERINTENDENT OF SCHOOLS
- Stephen H. Murphy, Ph.D., PRINCIPAL
- Jennifer McCurdy, ASSISTANT PRINCIPAL
- Mark Friese, STEM COORDINATOR
- Lea Graner Kenndy, HUMANITIES COORDINATOR
- Allison Van Eiten, FINE APPLIED ARTS COORDINATOR/GUIDANCE COUNSELOR
- Thomas Bousquet, DIRECTOR OF GUIDANCE
- Angela Capalbo, GUIDANCE COUNSELOR
- Carrie Dentich, GUIDANCE COUNSELOR
- Holly Sylvia, GUIDANCE COUNSELOR

CLASS OF 2010

STUDENTS: 186

POST HIGH-SCHOOL EDUCATION

Total: 82%
 4 year colleges: 60%
 2 year colleges: 22%

SAT-I MEAN SCORES

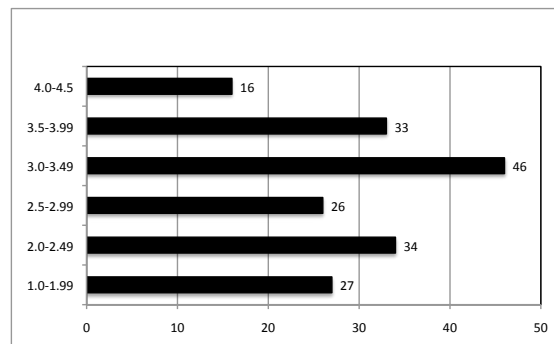
Year	Critical			
	Verbal	Reading	Math	Writing
2010		535	524	536
2009		533	534	542
2008		538	542	538
2007		528	519	534

72% (133/186) of the Class of 2010 took the SAT-I

ACADEMIC ACHIEVEMENTS

- o 2 National Merit Commended Scholars
- o 8 students have been designated as AP Scholars with Distinction.
- o 6 students have been designated as AP Scholars with Honor.
- o 18 students have been designated as AP Scholars based on their performance on AP exams.
- o 3 New London Scholars

RANGE OF GRADE POINT AVERAGES



GRADE DESIGNATIONS

A SUPERIOR	(90–100)
A+	(97–100)
A	(93–96)
A-	(90–92)
B ABOVE AVERAGE	(80–89)
B+	(87–89)
B	(83–86)
B-	(80–82)
C AVERAGE	(70–79)
C+	(77–79)
C	(73–76)
C-	(70–72)
D BELOW AVERAGE	(60–69)
D+	(67–69)
D	(63–66)
D-	(60–62)
E UNEARNED CREDIT	(ATTENDANCE)
F FAILURE	(BELOW 60)

All subjects for which a student receives credit for graduation are included in a student's rank in class. The rank is averaged from the final grade in each subject according to the following weights:

A+ = 4.3 B+ = 3.3 C+ = 2.3 D+ = 1.3
 A = 4.0 B = 3.0 C = 2.0 D = 1.0 F = 0.0
 A- = 3.7 B- = 2.7 C- = 1.7 D- = 0.7

Honors courses:

A+ = 4.8 B+ = 3.8 C+ = 2.8 D+ = 1.8
 A = 4.5 B = 3.5 C = 2.5 D = 1.5 F = 0.0
 A- = 4.2 B- = 3.2 C- = 2.2 D- = 1.2

Advanced Placement courses:

A+ = 5.3 B+ = 4.3 C+ = 3.3 D+ = 2.3
 A = 5.0 B = 4.0 C = 3.0 D = 2.0 F = 0.0
 A- = 4.7 B- = 3.7 C- = 2.7 D- = 1.7

ATHLETICS

Bryan Morrone, ATHLETIC DIRECTOR
 Manuel MacDonald, ASSISTANT TO THE ATHLETIC DIRECTOR

Baseball
 Cheerleading
 Field Hockey
 Football
 Golf
 Gymnastics
 Indoor Track
 Men's & Women's Basketball
 Men's & Women's Cross Country
 Men's & Women's Lacrosse
 Men's & Women's Soccer
 Men's & Women's Swimming
 Men's & Women's Tennis
 Men's & Women's Track & Field
 Crew
 Sailing
 Softball

CO-CURRICULAR ACTIVITIES

Big Brothers/Big Sisters
 Comcast Video Club
 Debate Team
 DECA
 Drama Club
 Environmental Awareness Club
 FBLA (Future Business Leaders)
 Foreign Language Club
 Jazz Band
 Law & Government Forum
 Link Crew
 Literary Magazine, *Sojourn*
 Math Team
 National Art Honor Society
 National Honor Society
 Newspaper, the *Brown & White*
 Pep Band
 Student Government
 Tri-M (Tri Modern Music Masters Honor Society)
 TSA (Technology Student Association)
 Yearbook, the *Panmystonian*
 YES (Young Educators' Society)